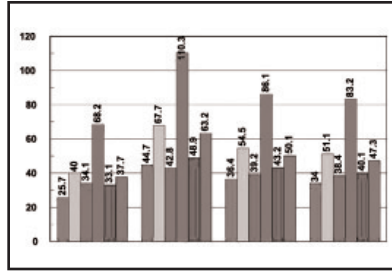


*Reporting process and progress of our community clubhouse renovation.*



## Advanced Power Tools—Energy Modeling Software

*By Kevin Duell, PE, LEED AP*

As you watch the clubhouse transform, you may wonder how design engineers selected the building’s mechanical and electrical systems. One of our power tools is energy modeling software. This software creates a virtual building, mimicking the real one, which gives us a baseline model. After moving the model through a year of operation, we can predict the energy usage for cooling, heating, lighting, and other building functions.

Then the real magic happens. By adding energy conservation measures—high-efficiency water heaters, advanced lighting controls, and high-performance heating and cooling units to name a few—we decrease the model’s energy use. Each measure is evaluated for savings, both in energy and expense, in order to determine the true cost. Without energy modeling, it would be difficult to understand the impacts of these decisions, especially with the advanced systems designed for the clubhouse.

One of the advanced systems that required additional modeling was the lighting. We created several building models to test a wide range of light sources and fixtures and their interaction with the clubhouse’s spaces and occupants. The results of these model tests enabled us to choose fixtures that increased energy efficiency, ease of maintenance, and the aesthetic appeal and functional requirements of the spaces.

Enjoy your new pool—and enjoy knowing it uses far less gas and electricity than the old one.

## COOLER

Kevin Duell

Interface Mechanical Engineer

*Sustainability champion Kevin Duell is a mechanical engineer who’s way into green building design. Days, he works for Interface Engineering, the firm providing HVAC expertise – the warm and cool air – for our clubhouse renovation. The rest of the time he’s either climbing trees, mentoring kids, giving eco-themed educational presentations, or dancing to swing or waltz music with his wife. Striving, you know, to keep the heat down.*



*Favorite principle: #8 Sustain our place*

## Talk to us

Throughout the renovation of our community’s clubhouse, we encourage Mt. Park members to comment, offer advice, or just talk to us! You can do so at [talktous@mtparkhoa.com](mailto:talktous@mtparkhoa.com)



## DEMOLITION OF OLD POOL PAVES WAY FOR NEW MT. PARK BEGINNING!

Piece by piece crews cut away at the antiquated aluminium pool



Pool windows were removed, and a ramp was made with fill and rock so heavy equipment and other materials could be brought in the pool area.



On May 15, 2009 crews began removing pool deck.



Aluminium pool shell and other materials will be recycled.



On May 13, 2009 crews began dismantling the aluminium pool shell.



The clubhouse pool sat empty since October 2005.

WATCH  
OUT  
FOR

FLYING  
DUST



## RENOVATION TIMELINE

### What We're Gonna Do

- June - 100% design drawings complete.  
Demolition of pool area continues.  
Work begins on elevator shaft. (Section of women's locker room to be screened off.)  
Mechanical equipment demolition begins.
- July - Demolition of pool area complete.  
Three-week pool subgrade surcharge.  
Electrical and plumbing begins in natatorium.

